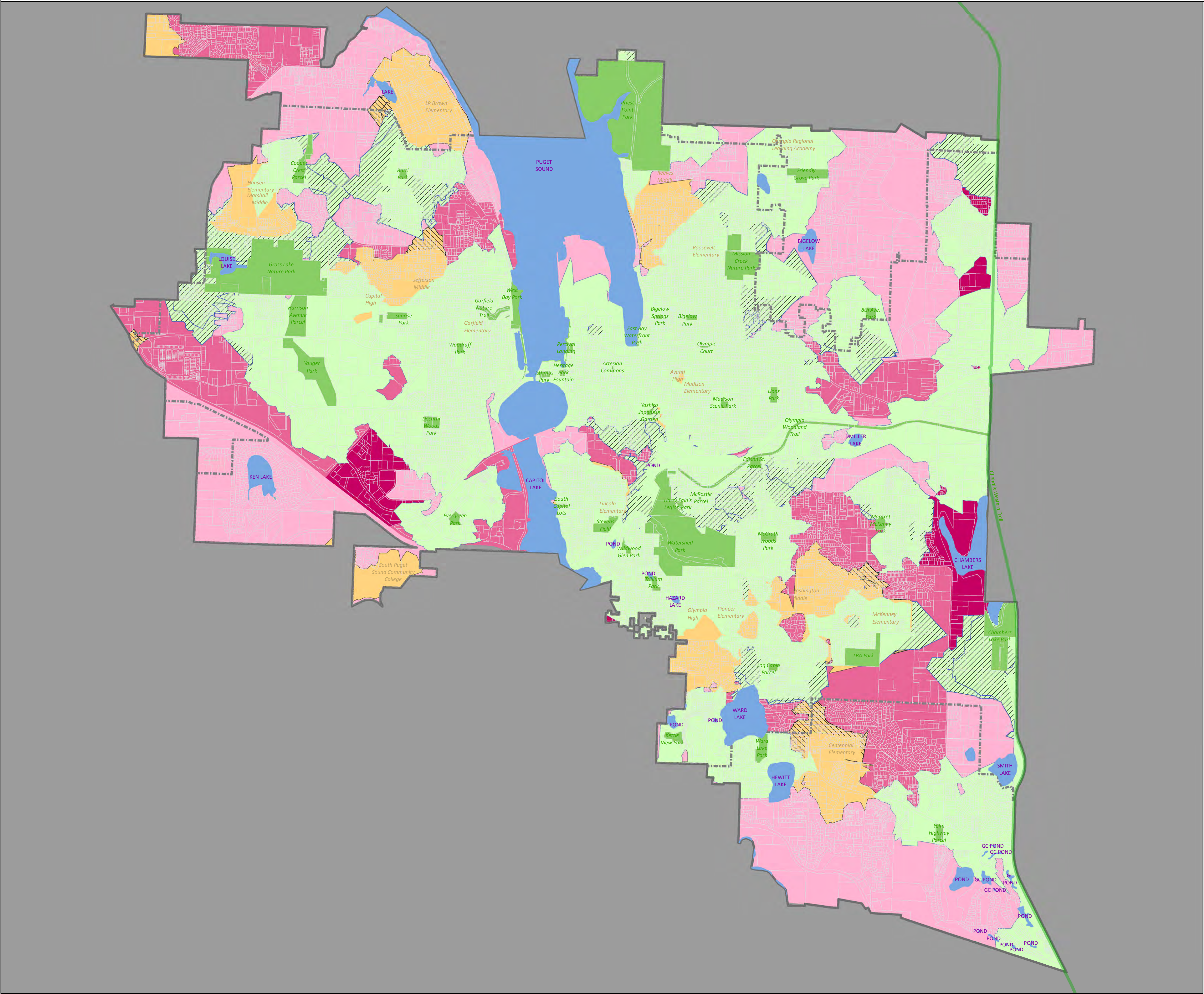




City of Olympia Overall Park Need - Pink areas show locations not walking distance to a park or school



Legend

City Limits
Urban Growth Area
Parcels
Park Land

Areas within 1/2 mile from a park or school

Areas 1/2 mile from a park (walkable)
Areas 1/2 mile from a park but major streets with no sidewalks
Areas 1/2 mile from a school (walkable)
Areas 1/2 mile from a school but major streets with no sidewalks

Areas more than 1/2 mile from a park or school

Overall Park Need

Very High
High
Moderate

(Level of need increases with high population density, high numbers of children and low income population - see below for methodology)

0 0.25 0.5 Miles
1 inch = 2,000 feet

PLEASE NOTE:

This map was created using roughly the same methodology as The Trust For Public Land's ParkScore website. Instead of their quantile breaks, we utilized Jenks breaks to more naturally divide areas into categories.

Park Need is based on:
1/2 Population (Population Density)
1/4 Kids (% population 19 and under)
1/4 Low Income (% income <\$40K)

15 min walk time = 1/2 mile

Roads were considered walkable if they contained at least one sidewalk or were residential streets.

Undeveloped park land and sidewalks slated for 2015 construction are included.

Park Need geometries are from the American Community Survey block groups, using their 2012 5-year estimate demographic variables.

The City of Olympia and its personnel cannot assure the accuracy, completeness, reliability, or suitability of this information for any particular purpose. The parcels, right-of-ways, utilities and structures depicted hereon are based on record information and aerial photos only. It is recommended the recipient and/or user field verify all information prior to use. The use of this data for purposes other than those for which they were created may yield inaccurate or misleading results. The recipient may not assert any proprietary rights to this information. The City of Olympia and its personnel neither accept or assume liability or responsibility, whatsoever, for any activity involving this information with respect to lost profits, lost savings or any other consequential damages.

Map printed 2/27/2015
For questions, please contact:
Jonathon Turlove, Associate Planner
jturlove@ci.olympia.wa.us
(360) 753-8068